

W1 SINGLE PHASE INVERTER

4 KW TO 5 KW

WAAREE[®]
One with the Sun



Wide MPPT Range



Maximum Efficiency 98%



Multiple-monitoring Method
(Wi-Fi, RS485, WLAN)

Up to 10% continuous overload capacity



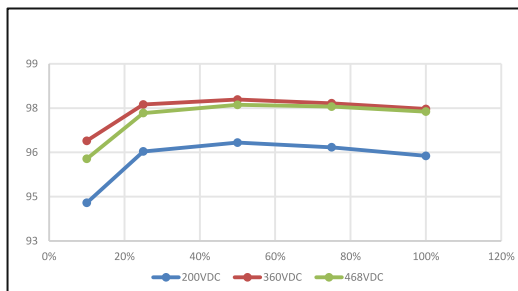
30% lighter than similar products,
easy to install



IP 65 dust-proof and water-proof



Efficiency curve



Integrated WiFi solution for remote monitoring
multiple user access

WAAREE Energies Ltd.
602, Western Edge-1, Off Western Express Highway, Borivali (E), Mumbai-400066. Maharashtra. INDIA
Tel : +91-22-6644 4444 • Toll free: 1800-2121-321 • Email: waaree@waaree.com

www.waaree.com

W1 SINGLE PHASE INVERTER

4 KW TO 5 KW



Technical Data	W1-4K-G3	W1-5K-G3
PV String Input Data		
Max. DC Input Power (W)	4400	5500
Max. DC Input Voltage (V)	600	600
MPPT Range (V)	90-580	90-580
Start-up Voltage (V)	120	120
MPPT Range for Full Load (V)	200-520	250-520
Nominal DC Input Voltage (V)	360	360
Max. Input Current per MPPT (A)	11/11	11/11
Max. Input Current (A)	22	22
No. of MPP Trackers	2	2
No. of Input Strings per Tracker	1	1
AC Output Data		
Nominal Output Power (W)	4000	5000
Max. Output Apparent Power (VA)	4000	5000
Nominal Output Voltage (V)	220/230/240	220/230/240
Nominal Output Frequency (Hz)	50/60	50/60
Max. Output Current (A)	18.2	22.8
Output Power Factor	~1 (Adjustable from 0.8 leading to 0.8 lagging)	
Output THDi (@Nominal Output)	<3%	<3%
Efficiency		
Max. Efficiency	98%	98%
Euro Efficiency	97.5%	97.5%
Protection		
Anti-islanding Protection	Integrated	Integrated
Input Reverse Polarity Protection	Integrated	Integrated
Insulation Resistor Detection	Integrated	Integrated
Residual Current Monitoring Unit	Integrated	Integrated
Output Over Current Protection	Integrated	Integrated
Output Short Protection	Integrated	Integrated
Output Over Voltage Protection	Integrated	Integrated
General Data		
Operating Temperature Range (°C)	-25 ~ 60	-25 ~ 60
Relative Humidity	0 ~ 100%	0 ~ 100%
Operating Altitude (m)	≤ 4000	≤ 4000
Cooling	Natural Convection	Natural Convection
Noise (dB)	< 25	< 25
User Interface	LCD	LCD
Communication	RS485 / WiFi	RS485 / WiFi
Weight (kg)	11.5	11.5
Size (Width*Height*Depth mm)	405*315*135	405*315*135
Protection Degree	IP65	IP65
Night Self Consumption (W)	<1	<1
Topology	Transformerless	Transformerless
Certifications & Standards		
Grid Regulation	VDE-AR-N 4105, VDE0126-1-1, EN50438(PL), EN50438(SW), AS4777.2, G83, IEC61727, IEC62116, CEI 0-21, RD 1699:2011, UNE 206006 IN: 2011, UNE 206007-1 IN: 2013	VDE-AR-N 4105, VDE0126-1-1, EN50438(PL), EN50438(SW), AS4777.2, G59, IEC61727, MEA, PEA, IEC62116, CEI 0-21, RD 1699:2011, UNE 206006 IN: 2011, UNE 206007-1 IN: 2013
Safety Regulation	IEC62109-1&2	
EMC	EN 61000-6-1, EN 61000-6-2, EN 61000-6-3, EN 61000-6-4, EN 61000-4-16, EN 61000-4-18, EN 61000-4-29	

*Waaree Energies Limited shall not be held responsible or liable for any unauthorized or undue alteration, modification, improvisation, change in data, contents, representation on collateral/brochure/datasheet of Waaree Energies Limited.
 * Images of product on collaterals/brochures/datasheet of Waaree Energies Limited are for representative purpose only and actual product may differ from the images depicted.

www.waaree.com